



Approver Guide

The Approver Guide provides a suggested process for reviewing your Insignia cases. Having a systematic approach should save time, improve consistency, and help you manage cases more efficiently.

STEP 1 - PRELIMINARY REVIEW

- TREATMENT PREFERENCES
- NOTES

STEP 2 - EVALUATION AND MODIFICATION

- EXPANSION & POSTERIOR TORQUE
- SMILE ARC & INCISOR TORQUE
- AP MOVEMENT

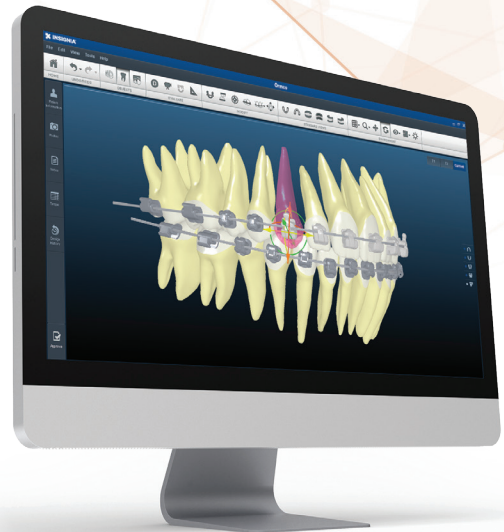
STEP 3 - VERIFY PROPER ALIGNMENT

- TORQUE, THEN VERTICAL
- ROTATIONS, THEN TIP
- IN-OUT, THEN MESIO-DISTAL

STEP 4 - EVALUATE OCCLUSION & OCCLUSAL CONTACTS

STEP 5 - APPLIANCE CHECK

- BRACKET PLACEMENT
- BRACKET TORQUE
- ARCH WIRES
- JIG GROUPINGS



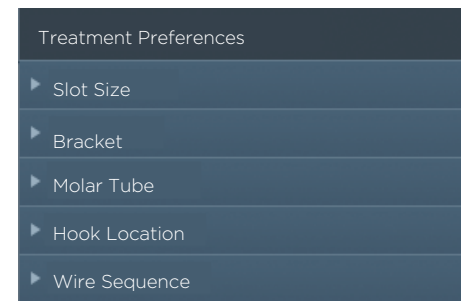
STEP 1 – PRELIMINARY REVIEW

Before making any modifications, review the following items:

TREATMENT PREFERENCES

- Confirm brackets, molar tubes, and wire selection
- Interproximal reduction (if applied)

To make any changes to your preferences, write a note to the technician.



NOTES



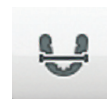
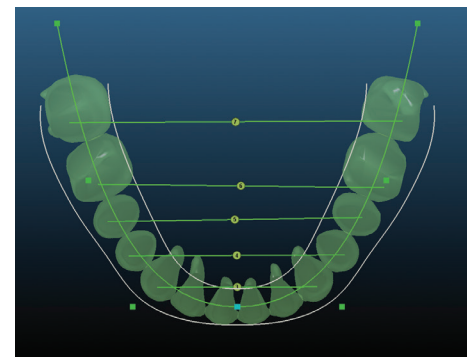
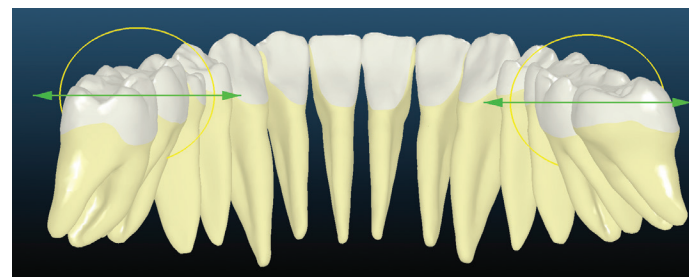
It is important to review the notes each time the case is returned to you. The technician will provide you with information about your setup and provide an alert if any issue exists.

STEP 2 – EVALUATION AND MODIFICATION

EXPANSION & POSTERIOR TORQUE

Evaluate the lower posterior torque, then in/out relative to the mandibular trough. Position the lower arch in a lingual view and turn superimposition 'on'. Posterior uprighting with minimal translation of root apex should be shown.

Modify the torque by using the Posterior Expansion (Group-Wise Editing) tool, then modify the in-out of the lower arch using the Arch Form tool. Or modify by leaving a note for the technician.

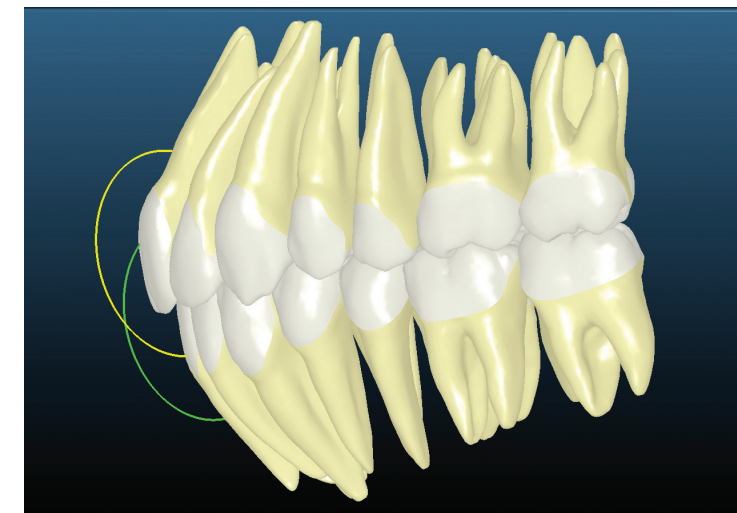


STEP 2 (continued)

SMILE ARC & INCISOR TORQUE

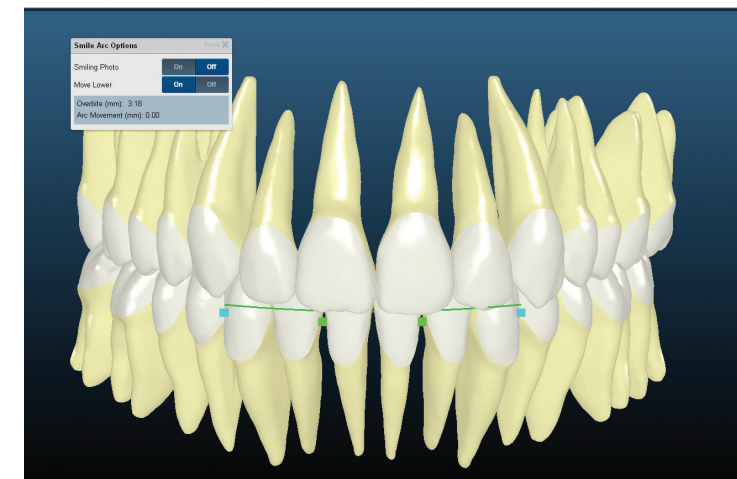
Evaluate incisor torque. Reference the patient's photos and cephalometric x-ray (if included).

Modify using the Anterior Torque (Group-Wise Editing) tool or by writing a note to the technician.



Evaluate the vertical movement of the maxillary incisors. Reference the patient's front smiling photo. Play the movie or toggle between T1 and T2 with superimposition 'on' to determine if the upper incisors move in the desired direction.

Modify using the Smile Arc tool or by writing a note to the technician.



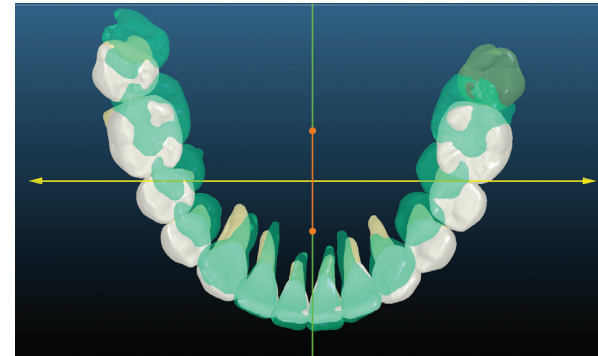
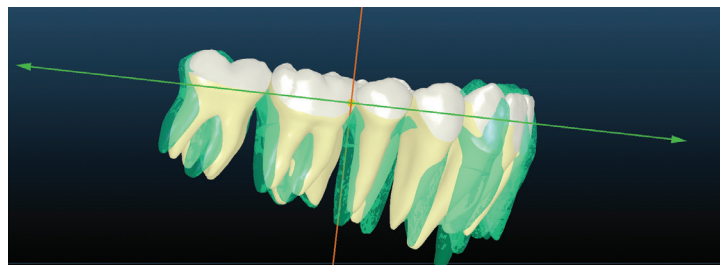
Tip! The setup has been tilted to simulate an average occlusal plane of 7 degrees. Compare the setup to the patient's cephalometric x-ray to confirm.

STEP 2 (continued)

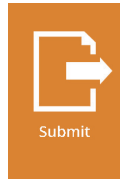
AP MOVEMENT

Evaluate the directional movement of each arch using the Movie tool or by selecting T2 with superimposition 'on'. It is important that the teeth are moving in the amount and direction that you deem appropriate, as this has implications for mechanics as well as torque compensation.

Modify the lower arch using the AP Correction (group-wise editing) tool, then write a note to the technician to adjust the upper arch if needed.



SUBMIT CHANGES



If modifications are made in steps 1 or 2, conclude your review at this time. Submit a note to the technician documenting your changes and requesting that the case be "reworked" accordingly. If no modifications are made in steps 1 or 2, continue with your review to step 3.

Tip! Leave a 'note to self' briefly listing the steps you've already completed to prevent repeating any work the next time that the case is returned to you.

STEP 3 - VERIFY PROPER ALIGNMENT

Evaluate each arch individually to verify proper alignment. Make minor modifications as deemed necessary. If significant discrepancies exist, write a note to the technician for improvement.

Modify by double-clicking on a tooth and selecting the desired movement.

Recommended order of movements:

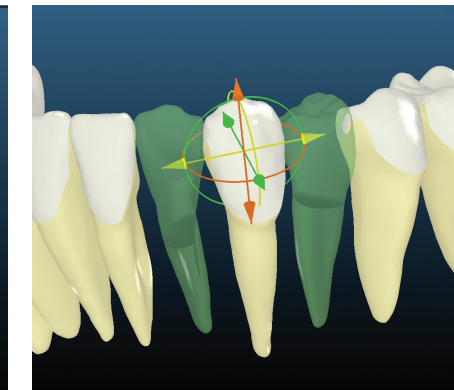
- torque, then vertical
- rotations, then tip (reference the Panoramic x-ray)
- in-out, then mesio-distal

Helpful views for evaluating each aspect:

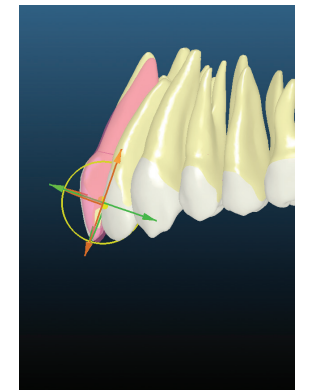
Rotations



Tip



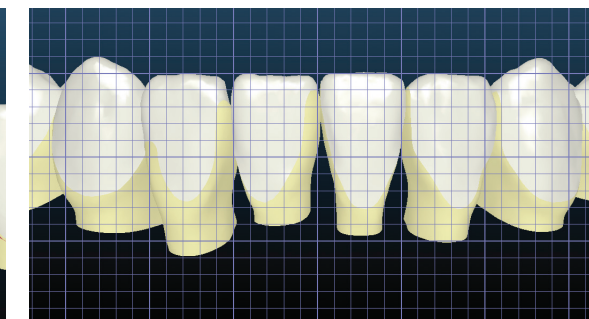
Torque



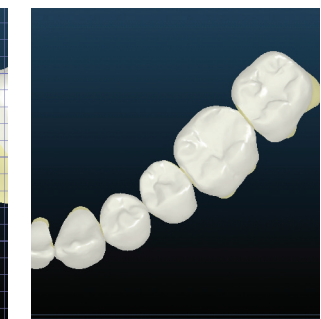
Torque



Vertical Symmetry



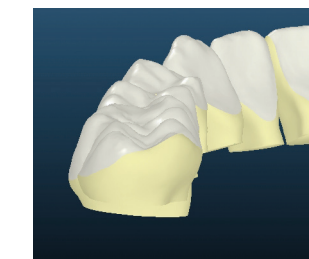
Rotations



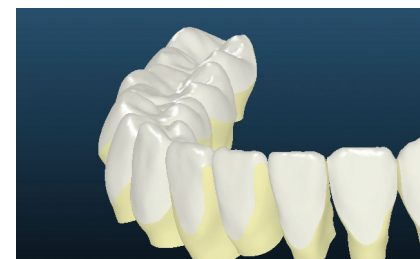
Tip



Marginal Ridges



Marginal Ridges



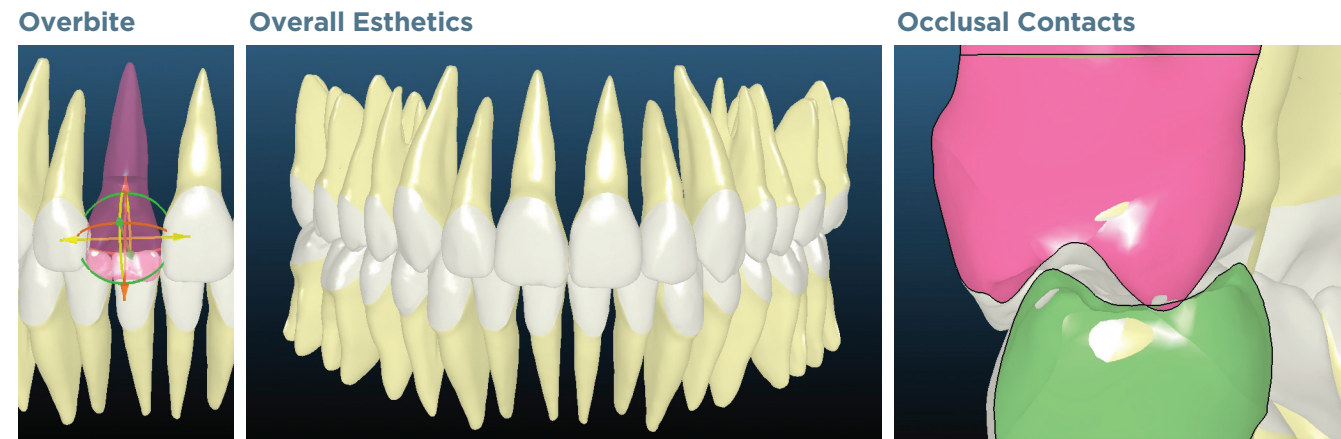
STEP 4 - EVALUATE OCCLUSION & CONTACTS

Evaluate the occlusion by displaying both arches. Consider buccal and anterior overjet, overbite, and overall esthetics.

Modify by writing a note to the technician. Be specific in documenting the improvements that are needed.

Evaluate occlusal contacts by using the Occlusion tool and clipping view. Verify that there are no interferences. If interferences exist, determine if these are due to misalignment or tooth anatomy.

Modify by writing a note to the technician. Minor modifications such as in-out, occlusogingival, and torque can be made within the Occlusion tool by double-clicking a tooth and selecting the desired movement; however if



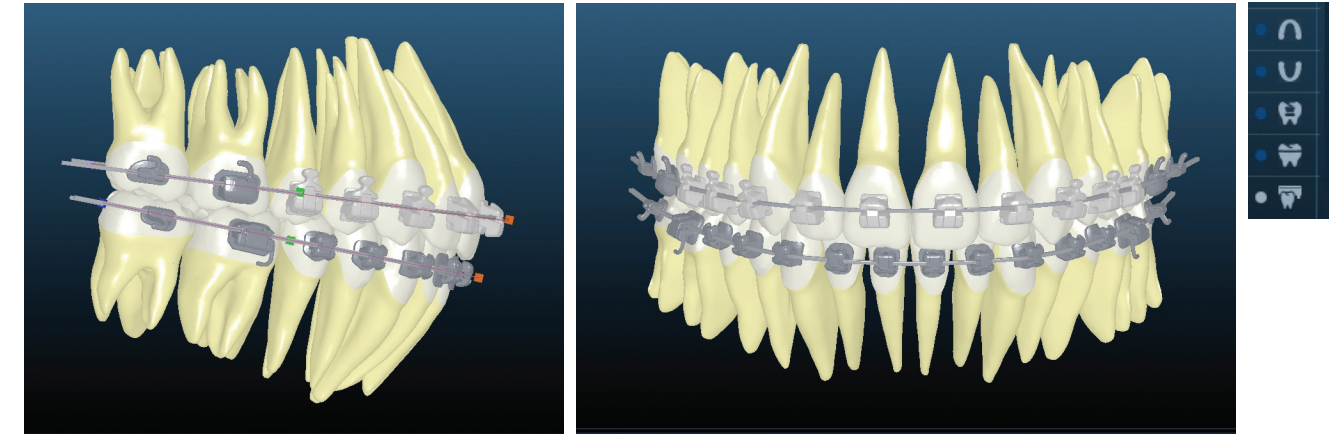
STEP 5 - APPLIANCE CHECK

BRACKET PLACEMENT

Place the model in frontal and lateral views.

Evaluate bracket placement to confirm that there are no occlusal or gingival interferences.

Modify by using the Wire Plane tool or by writing a note to the technician.



BRACKET TORQUE

Evaluate torque chart values. Determine if additional torque is needed to compensate for treatment mechanics.

Modify by adjusting tooth position or by writing a note to the technician.

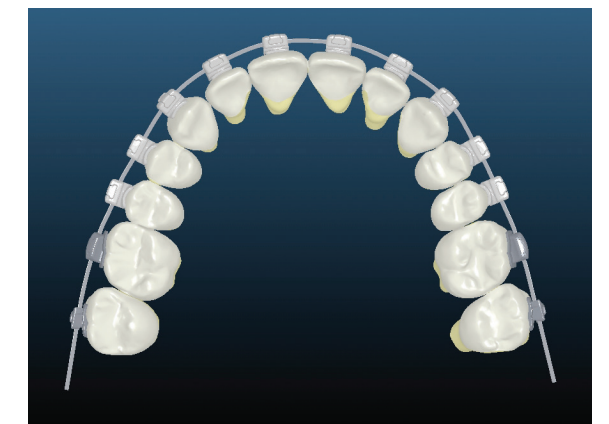
Torque Chart		
1	15.0 ()	() 15.0
2	13.0 ()	() 13.0
3	7.0 ()	() 7.0
4	-11.0 ()	() -11.0
5	-11.0 ()	() -11.0
6	-18.0 ()	() -18.0
7	-14.0 ()	() -14.0
8	-2.3 ()	() -0.8
9	-0.7 ()	() -3.5
10	-3.6 ()	() -6.0
11	-3.3 ()	() -6.0
12	-10.2 ()	() -12.9
13	-28.0 ()	() -28.0
14	-10.0 ()	() -10.0

ARCH WIRES

Place the model in an upper and lower occlusal view.

Evaluate the arch wires to confirm that there are no bends in the wire that will impact treatment. Also confirm that the arch wires are long enough to accommodate unerupted teeth.

Modify by adjusting tooth position or by writing a note to the technician.

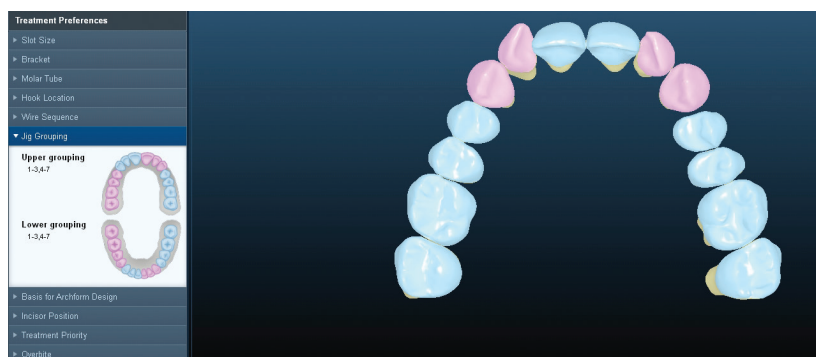


STEP 5 (CONTINUED)

JIG GROUPINGS

Evaluate setup in T1 with brackets on. Jig groupings should coincide with your preferences unless an issue exists that results in a single jig being provided.

Modify by writing a note to the technician.



READY TO APPROVE?



If no further modifications are needed, you are ready to click 'Approve'.

The Approver software will then guide you through a final check of bracket placement and arch wires.

